

# PRODUCT INFORMATION PACKET

Model No: M1110024.00  
Catalog No: M1110024.00  
Metric Motor, 180 V, 3000 RPM, 56D Frame, IP54



Regal and are trademarks of Regal Rexnord Corporation or one of its affiliated companies.  
©2022 Regal Rexnord Corporation, All Rights Reserved. MC017097E

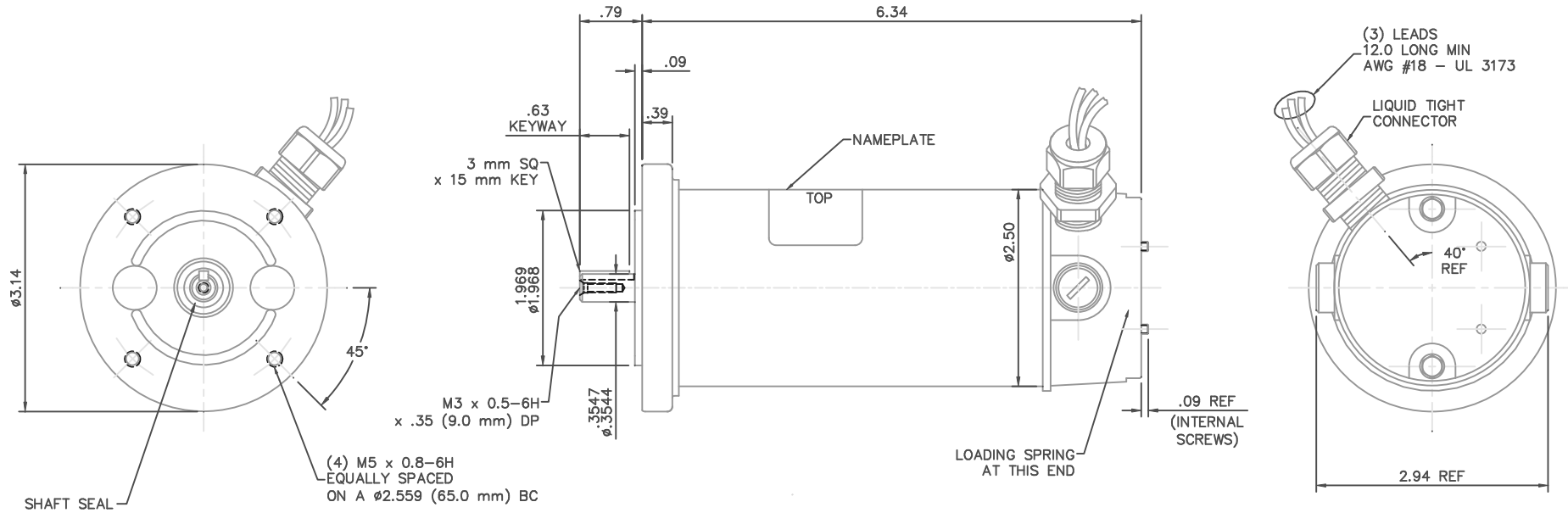
**Nameplate Specifications**

Output KW	<b>0.06 kW</b>	Voltage	<b>180 V</b>
Current	<b>0.55 A</b>	Speed	<b>3000 rpm</b>
Service Factor	<b>1</b>	Efficiency	<b>65.1 %</b>
Duty	<b>S1</b>	Insulation Class	<b>F</b>
Frame	<b>56D</b>	Enclosure	<b>IP54</b>
Thermal Protection	<b>No Protection</b>	Ambient Temperature	<b>40 °C</b>
Drive End Bearing Size	<b>6000</b>	Opp Drive End Bearing Size	<b>608-S</b>
UL	<b>Recognized</b>	CSA	<b>Y</b>
CE	<b>N</b>		

**Technical Specifications**

Rotation	<b>Reversible</b>	Mounting	<b>B14</b>
Overall Length	<b>6.34 in</b>	Frame Length	<b>4.63 in</b>
Shaft Diameter	<b>0.375 in</b>	Shaft Extension	<b>0.79 in</b>
Torque	<b>27 OZ-IN</b>		
Connection Drawing	<b>M100526801</b>	Outline Drawing	<b>M1030909</b>

This is an uncontrolled document once printed or downloaded and is subject to change without notice. Date Created:09/19/2022

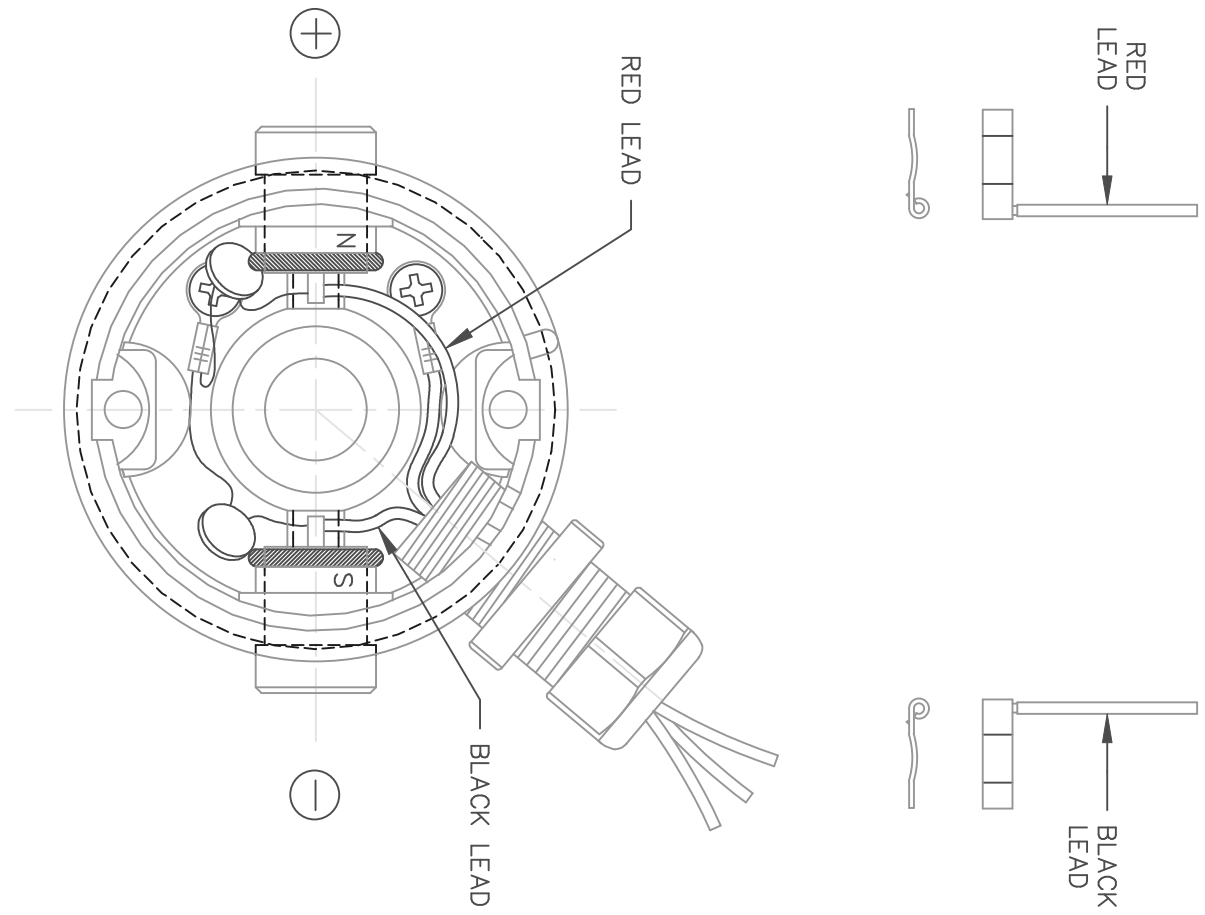



NOTES:  
1) DO NOT HI-POT TEST MOTOR

		TO TOLERANCES UNLESS SPECIFIED		LEESON		ELECTRIC MOTORS GEARMOTORS AND DRIVES		DRAWN IPG 11/21/03		
		DEC.	INCHES					CHK	SAD 11/21/03	
		.X	±.1					APPD		
02	ADDED .09 REF DIM, ECR 82295	IPG	5/14/2004	SAD	.XX	±.03	TITLE	SCALE	3=4	
01	ADDED MISSING (2) $\phi .201$ PER ECR 83680	BPW	04/01/04	SAD	.XXX	±.005	OUTLINE		REF	
00	RELEASED: REF. PR030583 (M1030555.00)	IPG	11/21/03	SAD	.XXXX	±.0005	25 FRAME DC - IEC 56 - B14 C FACE		FMF M1110024.00	
NO. REVISION		BY & DATE		CHK	ANG	±1/2'	MAT'L	FINISH	PREV	
THIS DRAWING IN DESIGN AND DETAIL IS OUR PROPERTY AND MUST NOT BE USED EXCEPT IN CONNECTION WITH OUR WORK ALL RIGHTS OF DESIGN AND INVENTION ARE RESERVED THIS IS AN ELECTRONICALLY GENERATED DOCUMENT - DO NOT SCALE THIS PRINT				RFP	CAD FILE M1030909			SIZE	DRAWING NO.	REV.
				DIST				B	M1030909.00	02

DC MOTORS

EXTERNAL CONNECTIONS FOR CCW ROTATION  
 VIEWING LEAD END OF MOTOR WITH RED LEAD  
 POSITIVE AND BLACK LEAD NEGATIVE (-)  
 FOR CW ROTATION REVERSE POLARITY

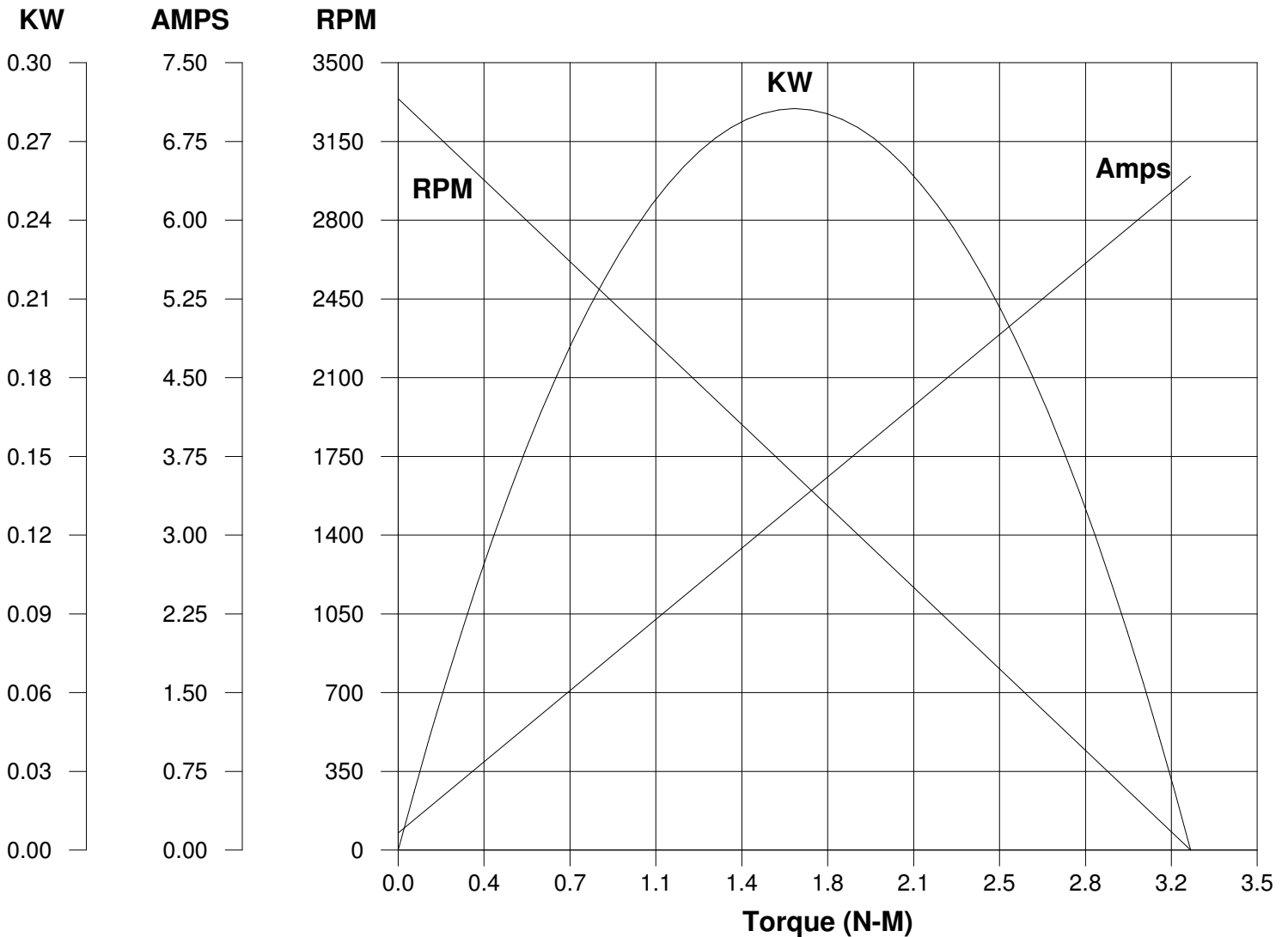


				TOLERANCES UNLESS SPECIFIED		 ELECTRIC MOTORS GEARMOTORS AND DRIVES	DRAWN IPG 11/3/03	
				DEC.	INCHES		CHK SAD 11/3/03	APPD
02	CORRECTED "N" & "S", ADDED TRU-TORQ TO THE TITLE	IPG 3/2/2004	SAD	.X	±.1	TITLE CONNECTION DIAGRAM TRU-TORQ	SCALE 1=1	
	BLOCK AND ORACLE DESCRIPTION, ECR 83990			.XX	±.01		REF	
01	CORRECTED "N" & "S", ECR 83508	SMB 01/21/04	IPG	.XXX	±.005	MAT'L.	FMF M1110024.00	
00	RELEASED: REF. PR030583	IPG 11/3/03	SAD	.XXXX	±.0005	FINISH	PREV	
NO.	REVISION	BY & DATE	CHK	ANG	±1/2'			
THIS DRAWING IN DESIGN AND DETAIL IS OUR PROPERTY AND MUST NOT BE USED EXCEPT IN CONNECTION WITH OUR WORK ALL RIGHTS OF DESIGN AND INVENTION ARE RESERVED THIS IS AN ELECTRONICALLY GENERATED DOCUMENT - DO NOT SCALE THIS PRINT			RFP	CAD FILE M100526801		SIZE A	DRAWING NO. M1005268.01	REV. 02
			DIST					

# LEESON ELECTRIC CORPORATION

## TYPICAL PERFORMANCE CURVE FOR DIRECT CURRENT PERMANENT MAGNET MOTOR

<b>Model No.</b> <u>980.542</u>	<b>Catalog No.</b> <u>M1110024.00</u>	
<b>KW</b> <u>0.060</u>	<b>RPM</b> <u>3000</u>	<b>DC Volts</b> <u>180.0</u>
<b>F.F.</b> <u>1.38</u>	<b>Encl</b> <u>IP54</u>	<b>Type</b> <u>E56-6</u>
<b>Max. Amb.</b> <u>40.0 Deg C</u>	<b>Insul.</b> <u>F</u>	<b>Frame</b> <u>56D</u>
		<b>N.P. FLA</b> <u>0.55</u>
		<b>S.F.</b> <u>1.00</u>
		<b>Duty</b> <u>S1</u>



**Ra** 27.600 Ohms  
**La** 67.60 mHenrys  
**Ja** 0.2897 KG-CM<sup>2</sup>  
**Ke** 52.56 V/KRPM

**Kt** 0.5019 N-M/AMP  
**Imax** 8.9 AMPS Allowed  
**FL Torque** 0.1907 N-M  
**FL EFF** 65.10 %

**Winding W-** MD25238-1      **Prepared by** V. Boehlen      **Date** 05-11-2005